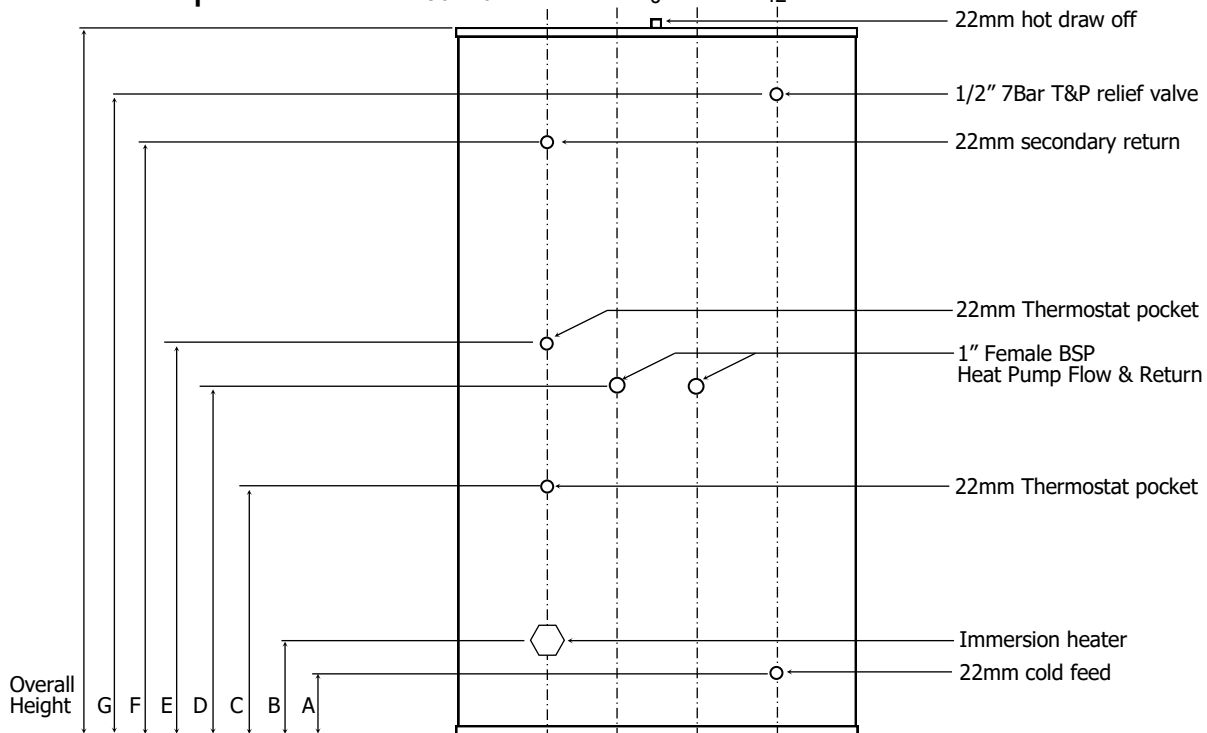


Technical Data Sheet

Tempest Slimline Heat Pump

400-500L	32°	0°	32°
200-300L	38°	0°	38°
90-170L	42°	0°	42°



All unvented cylinders come with an unvented component kit to suit.

Capacity (L)	150	170	200
Height (mm)	1200	1500	1800
Diameter (mm)	470	470	470
A (mm)	155	155	155
B (mm)	185	185	185
C (mm)	576	576	598
D (mm)	901	901	923
E (mm)	971	971	993
F (mm)	n/a	n/a	1405
G (mm)	1010	1305	1605

Capacity (L)	150	170	200
ASHP Coil Surface Area	2	2.2	3.3
ERP Band	C	C	C
Immersion Rating (kw)	3	3	3
Standing Heat Loss (kwh/24hrs)	1.72	1.92	2.04



T: 01952 257961
F: 01952 253452

E: sales@telford-group.com
W: www.telford-group.com

Technical Data Sheet

Tempest Heat Pump

Material Type (<i>Cylinder body</i>)	Stainless Steel Duplex 2304
Material Type (<i>Cylinder fittings</i>)	Stainless Steel 316L
Material Type (<i>Cylinder coils</i>)	Stainless Steel 316L
Foam insulation type	Polyurethane
Max operating pressure	3bar
Max design pressure	7bar
Max supply pressure	16bar
Max primary pressure	3bar
Expansion relief valve setting	6bar
T&P valve setting	7bar / 90°C
Immersion heater rating	240v, 3kw

Information on warranty.

The Stainless Steel cylinder carries a lifetime guarantee against faulty manufacture or materials, provided that:

- The product is used solely for the storage of water from mains public supply.
- The product has not been modified or tampered with.
- The product has been installed and maintained in accordance with the installation instructions.

The immersion heater, water control valves, cylinder thermostat, expansion vessel and energy cut out valves are guaranteed for two years from the date of manufacture or a new build. For new install/ replacement one year.

All cylinders are WRAS approved.

Exclusions to the guarantee.

- Any labour charges associated with replacement of the unit or any of its components.
- Any consequential losses caused by malfunction or failure of the unit.
- The effects of scale build up.
- Bore hole/well water installations.

