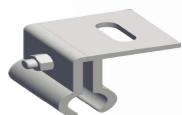
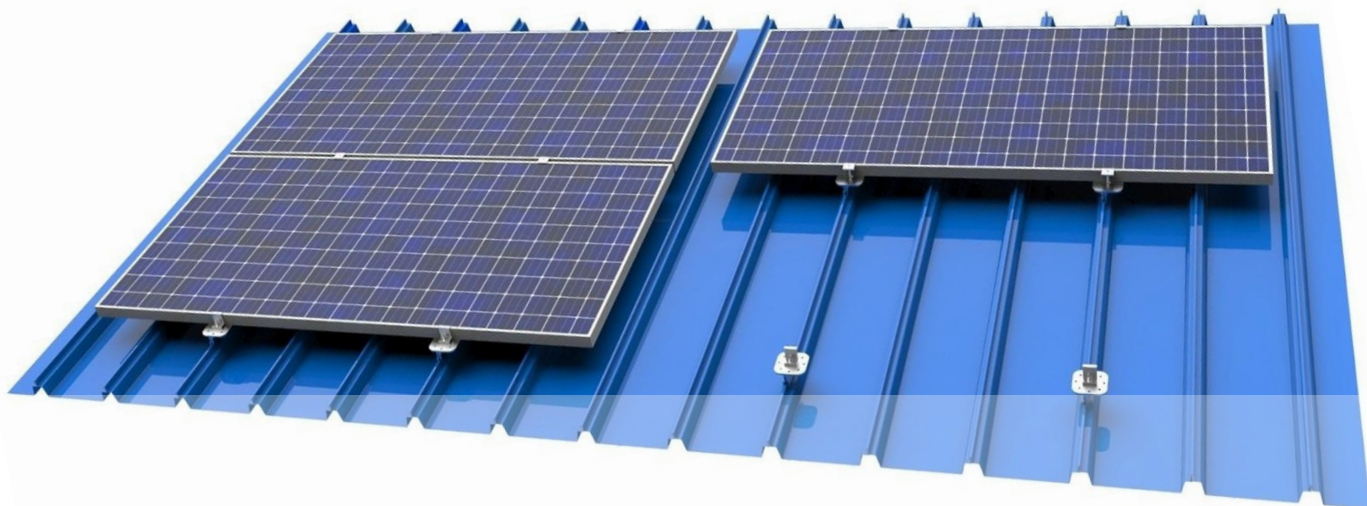


Roof Clamps

Railless / with rail / with tilt leg



KALZIP ROOF CLAMP



KLIP-LOK 406 ROOF CLAMP



KLIP-LOK 406 ROOF CLAMP



STANDING SEAM ROOF CLAMP, AL



STANDING SEAM ROOF CLAMP, SS

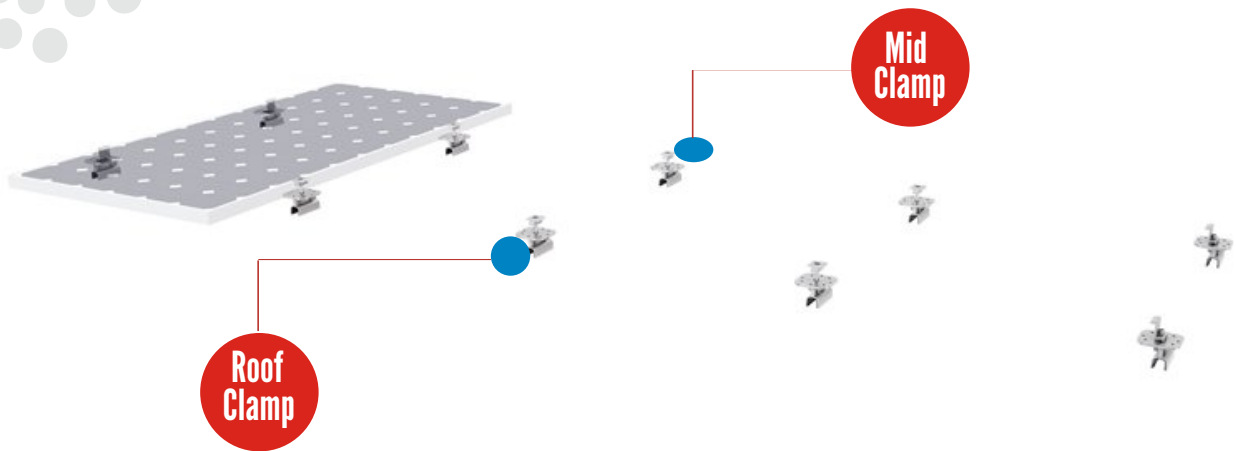
Product Features

- Widely used for both crystalline and thin film module .
- Easy & quick installation.
- Only 2~3 kinds of components and no more than two kinds of tools in whole system fixation.
- All system components are made with high quality aluminum & stainless steel.

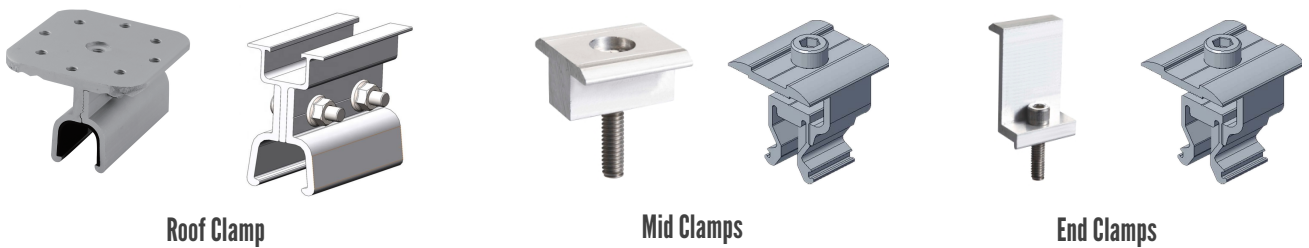
Technical Data

Project site	Metal sheet roof
Slope of roof	Up to 60°
Max Building Height	Up to 20m
Wind Load	60m/s
Snow Load	2.0kn/ m ²
Applicable Module	Frame / Frameless module, crystalline/ thin film
Module Orientation	module Landscape or portrait
Standard	MCS, AS/NZS1170.2:2011
Material	Stainless steel 304, AL6005-T5

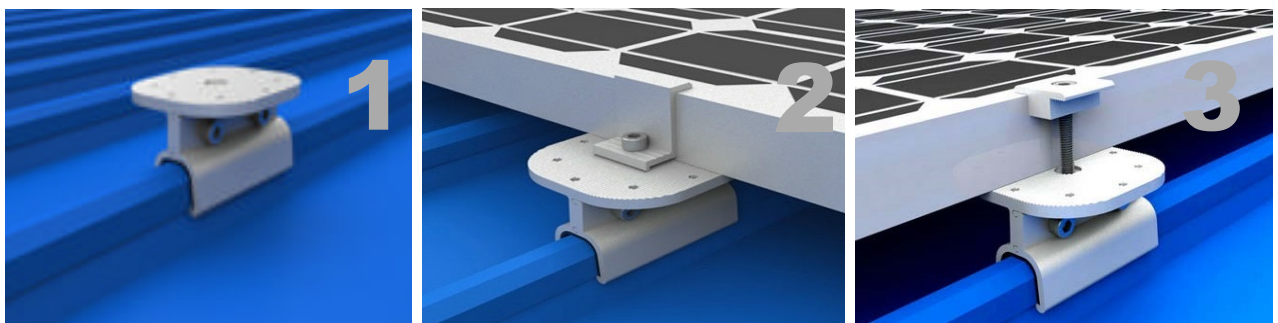




Key Components



Installation(klip-lok 700 clamp)

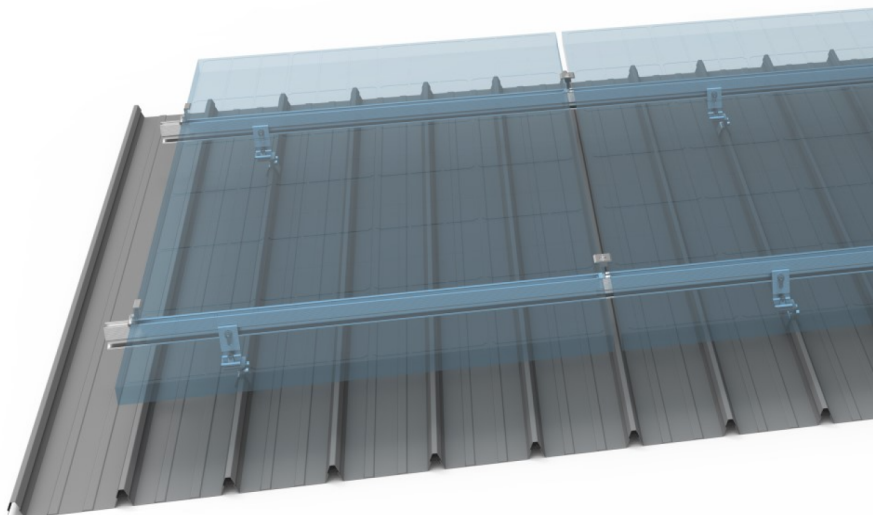


Fix the roof clamps on the roof.

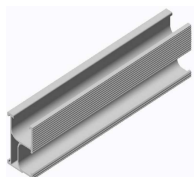
Fix the end clamps with the roof clamps.

Fix the mid clamps with the roof clamps.

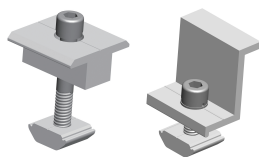
※ For installation of other roof clamps, pls check our installation file or [contact us at info@fastensolar.com](mailto:info@fastensolar.com)



Key Components



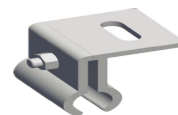
GS Rail



Module Clamps

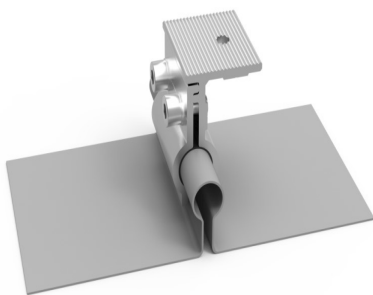


L Foot



Roof Clamp

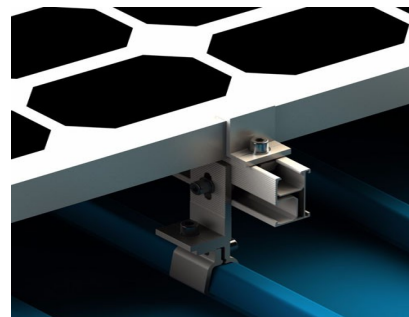
Installation(kalzip clamp)



Fix the roof clamps on the Kalzip roof.



Connect the L foot with M8*25 allen bolt with the roof clamp, and then fix the L foot with the GS rail with the rail clip.

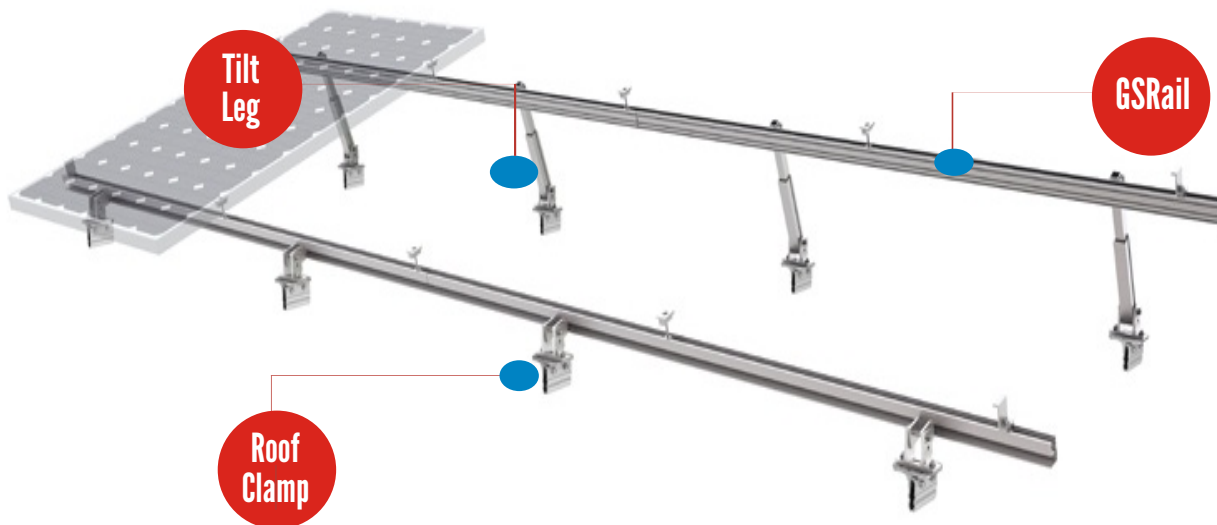


Fix the mid clamps with the roof clamps.

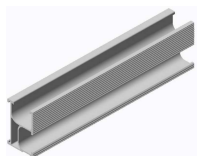
※ For installation of other roof clamps, pls check our installation file or [contact us at info@fastensolar.com](mailto:info@fastensolar.com)

With tilt leg

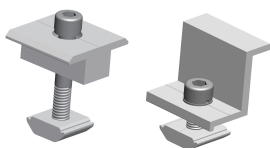
System Overview



Key Components



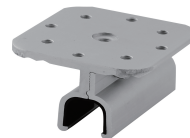
GS Rail



Module Clamps

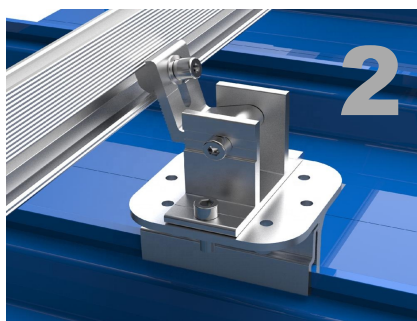
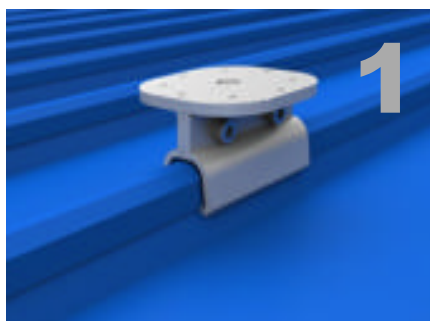


Tilt Leg



Roof Clamp

Installation(klip-lok 700 clamp)



Fix the roof clamps on the Klip-lok roof.

Fix the front leg with the roof clamps.

Fix the rear leg with the roof clamps.

※ For installation of other roof clamps, pls check our installation file or [contact us at info@fastensolar.com](mailto:info@fastensolar.com)